



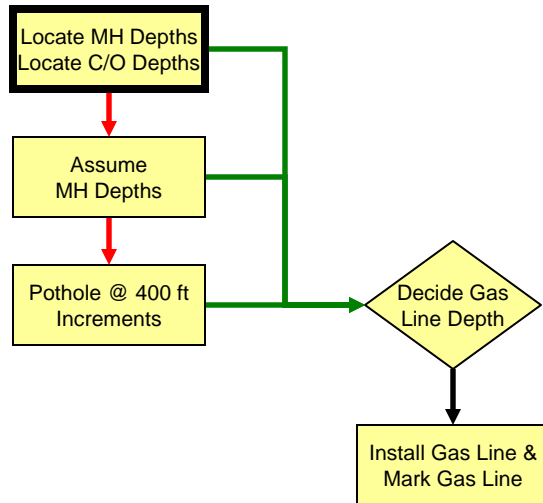
Sanitary Sewer Cross Bore Inspection Process

- **Startup**
 - Review/approve contract
 - Prepare for equipment and personnel needs
 - Acquire mapping
 - Mobilize
- **Field Work**
 - Locate manhole/sewer line
 - Verify access
 - Determine best inspection method
 - Inspect laterals for cross bores
 - Fix cross bores
 - Re-inspect to confirm repair is acceptable
 - Report findings
- **QA/QC – Data Analysis**
 - Review field data
 - QA/QC – request recollection if necessary
 - Prepare final reports
 - Follow-up with gas line client for report approval

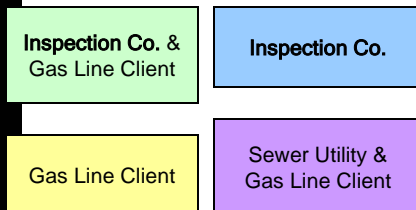
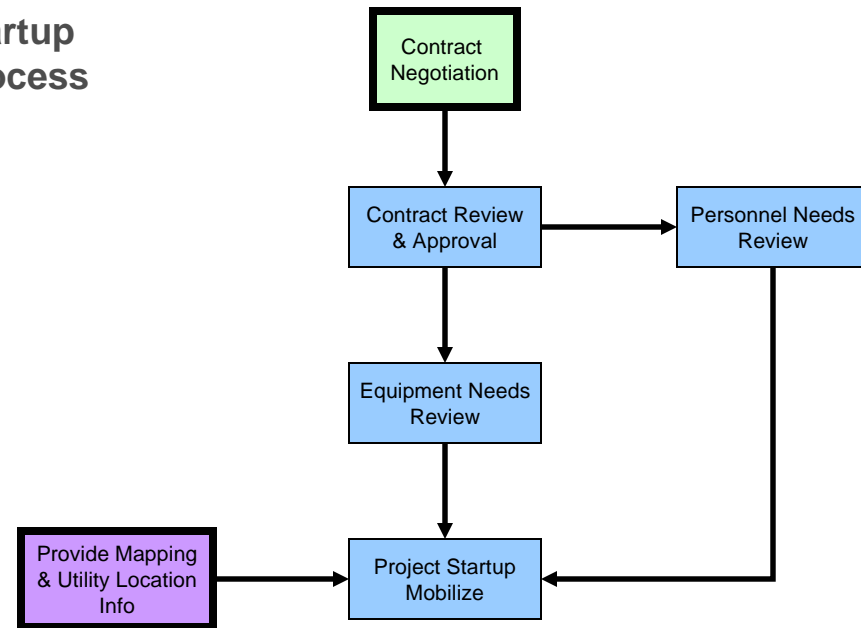


Cross Bore Inspection Process Chart - Startup Processes for Inspection co. and Gas Client

Gas Client & Sewer Utility



Startup Process



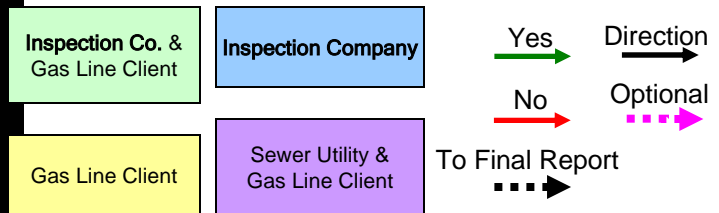
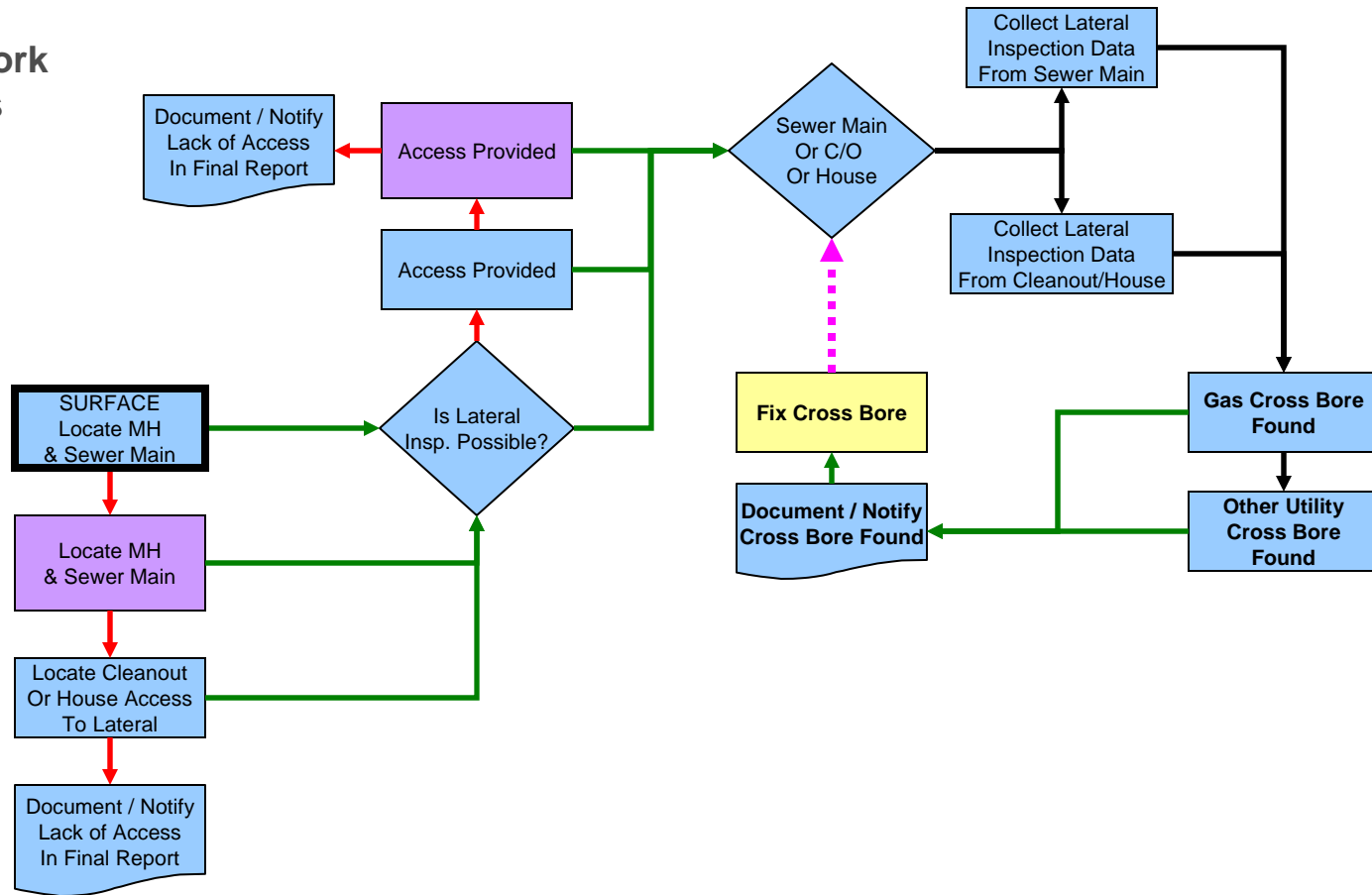
Courtesy of Hydromax USA

[Back to complete chart](#)



Cross Bore Inspection Process Chart - Field Work Process

Field Work Process



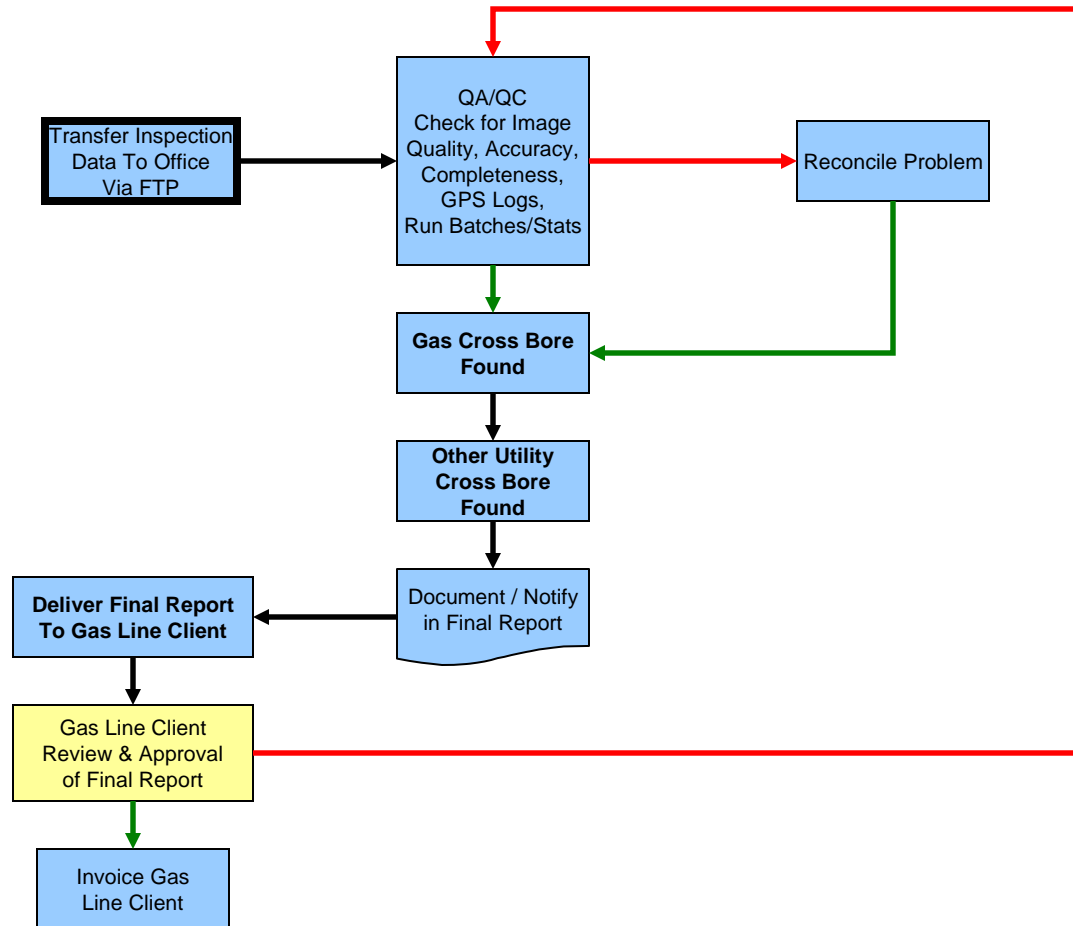
Courtesy of Hydromax USA

[Back to complete chart](#)



Cross Bore Inspection Process Chart - QA/QC Data Analysis

Office Analysis Process



Inspection Co. & Gas Line Client

Inspection Co.

Yes →

No →

Direction →

Gas Line Client

Sewer Utility & Gas Line Client

[Back to complete chart](#)